

Ecotourism Sites

The important places in the sanctuary of tourism point of view are: Bharatpur, Kuasara, Godibari, Godibari, Kochilaberena, Ambakhali, Baunsaberena, Bualigarh, Godabhangatarang, Pitagadia, Naharthali, Kumarakhunti, Salabari, Pithakhia, Mantu, Dahanigadia, Nuakua, Dholakatha, Jhumka, Deras, Baunsaghara, Jhalara, Ambilo, and Madua.



Watch Tower at Deras

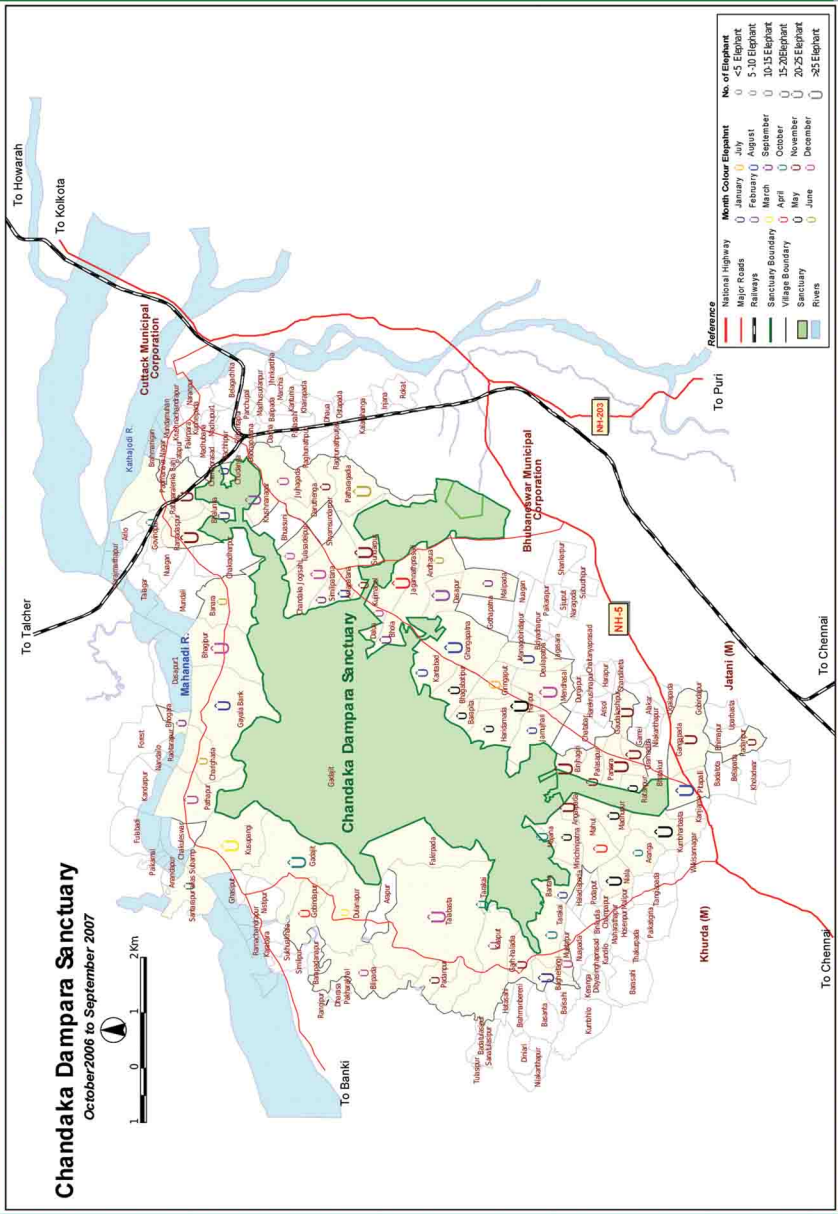


Shree Shree Giridhari dev Temple (1840 A.D), Constructed by King Kishoi Mansingh at Dompada

Do & Don't

- Obtain entry permit before entering.
- Appreciate the colours and sounds of nature.
- Treat the Protected Area/wilderness area with respect.
- Dress in colours that blend with the natural environment.
- Do not take away flora and fauna in the form of cuttings, seeds or roots, Take pictures, but without disturbing wildlife.
- Keep a reasonable distance from wild animals, and do not provoke them, do not carry pet animals.
- Dispose waste responsibly: carry back all non-biodegradable litter, and leave campsites litter-free before departing.
- Do not approach animals closer than 15 m or disturb them while they are resting, Do not use plastics and its derivatives, Alcohol and smoking are strictly prohibited.
- Carrying of guns, fire arms, inflammable materials are strictly prohibited, as per the provisions of the WildLife (Protection) Act, 1972, and is punishable by law.

Remember: The Sanctuary is primarily established to protect, propagate and develop wildlife and its environment. All are guests inside the sanctuary here. Let your purpose be fulfilled in consistent with this objective.



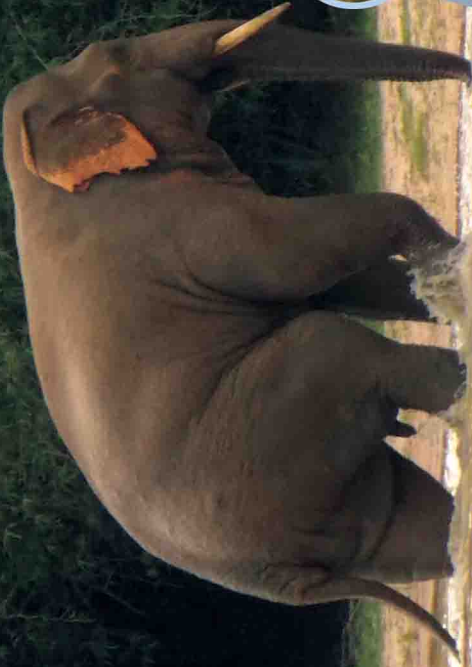
Chandaka Wildlife Division

(Forest and Environment Department, Government of Odisha)
Gajo Vihar Barmunda, Odisha



Concept and Design: Chandan, Manoj
Photo Credit: Chandan Jani

CHANDAKA
DAMPARA WILDLIFE SANCTUARY



The Green Lungs of Bhubaneswar

Chandaka- Dampara forest, near Bhubaneswar represents the north-eastern limits of Eastern Ghats. Bloomed to become a fabulous Eco-diversity, this is now an isolated forest, which once formed a part of vast Eastern Ghats forest and Central Indian Elephant range.

The area was once a stronghold of tiger, until 60s; when the last tiger embraced captivity in 1967. It fell inside an open air enclosure in Nandankanan Zoo. The forests once teemed with tiger, leopard, Sambar, Barking deer, Chital, Wild Boar, Gaur and other wild animals. With the establishment of state capital at Bhubaneswar in 1957, this forest came under enormous pressure for firewood, and timber. Consequently, forests deteriorated significantly and elephants, which were in harmony with their habitat became problematic.

Year 1982, was a turning point in the conservation history of the area, when state Govt. constituted this forest as a wildlife sanctuary for overall protection of the then gasping forest ecosystem more particularly, to provide a safe haven for resident elephants.



ADMINISTRATION UNIT

Name of Division	Name Range	No Section	No of Beat
Chandaka WL Division	Bhubaneswar	2	5
	Chandaka	3	10
	Haladia	3	8
	Dampara	3	10
	Antidepradation		
	Habitat Management		

TARIFF

Type of Fees	Indian Per day (in Rs.)		Foreign / National Per day (in Rs.) Strength	
Entry fee	Rs.40/-		Rs.1000/- & Rs.450/- for scientific Researcher.	
2	Rs.25/- for a group of 10 or more		Rs. 25/- each & Rs. 40/- for a group of 10 or more.	
3	Rs.20/- Per student & Rs.10/- each for a group of 10 or more			
Camera	Amateur	Professional	Amateur	Professional
	First 3 days - Rs. 50/-	Per day - Rs. 1000/-	First 3 days - Rs. 200/-	Per day - Rs. 2000/-
	Every additional day - Rs. 30/-		Every additional day - Rs. 100/-	
Cine Camera	Amateur	Professional	Amateur	Professional
	First 3 days - Rs. 5000/-	Per day - Rs. 25000/-	First 3 days - Rs. 10000/-	Per day - Rs. 50000/-
	Every additional day - Rs. 1000/-		Every additional day - Rs. 2000/-	
Making Wildlife Documentary	Per day Rs. 15,000/-		Per day Rs. 20,000/-	
Vehicle	Rs. 50/- for four wheeler only.			
Service Charge	Carried out by Eco - Development Committees for maintenance of Pindies at Deras & Jhumuka.			

This tariff is applicable as per Govt Notification No. FE-WL-WLF-0052-20152430 / F&E Dt- 08.02.2016.

ECOTOURISM

Year	Number of Tourists		Total	Revenue Collected in Rs	Corpus fund realized in Rs
	Indian	Foreigner			
2011-12	17837	2	17839	75131	359217
2012-13	21799	8	21817	59421	374944
2013-14	29816	14	29830	76016	500370
2014-15	38699	24	38723	50372	357124
2015-16	43956	24	43980	129806	633760

AFFORESTATION ACTIVITIES

Y e a r	Block plantation Area planted in Ha	Avenue plantation Area planted in Rkm	No of seedlings distributed to create forest outside the PA
2011-12	274.25	14	100000
2012-13	257.5	54	100000
2013-14	121.75	44	200000
2014-15	94.375	10	600000
2015-16	47.375	0	250000

ANIMAL DEPRADATION

Year	Area of Crop damaged in Acres	Compassionate amount paid in Rs	Human death	Compassionate amount paid in Rs
2011-12	79.88	337680	NIL	NIL
2012-13	69.21	381250	2	400000
2013-14	66.40	664000	NIL	NIL
2014-15	66.40	660400	NIL	5000 (Injury)
2015-16	70.925	709250	NIL	NIL

Human death was notices in 2012 where as compassionate payment was paid on 2013 -14= Rs. 400000.

CONSTRUCTION OF ELEPHANT PROOF BARRIER

Item of work	2012-13 IN Rmt			2013-14 IN Rmt			2014-15 IN Rmt			2015-16 IN Rmt
	General	Tender	TOTAL	General	Tender	TOTAL	General	Tender	TOTAL	
New Trench	303	2976	3279	-	-	-	0	3405.6	3405.6	193
Trench renovation	4388.7	-	4388.7	1525	-	1525	1469.5	0	1469.5	2575.3
Laterite lining	324.5	846	1170	-	163.5	163.5	0	3664.6	3664.6	20
R.R. Wall	1683.5	2099	3782.5	-	2521.36	2521.36	0	5488.9	5488.9	
RR Wall repair	-	-	-	893	-	893	732	0	732	698.93
Water Passage	-	-	80	-	-	80	-	-	-	10
Solar Fence	-	-	-	-	-	-	-	-	-	1430

Seasonal barrier 149 numbers at 5 mt spacement has been constructed in 2013-14 in Dampara Range



Different Types of Elephant Proof Barriers

OFFENCE REGISTERED

Year	UD Case	OR Case	Total Case
2010- 11	88	314	402
2011- 12	41	161	202
2012-13	18	162	180
2013-14	15	156	171
2014-15	19	97	116

FIRE INCIDENCE

Y e a r	Area effected by Ground fire in Ha
2011-12	313.89
2012-13	73.69
2013-14	84.4
2014-15	77.6
2015-16	52.21 (upto 21.03.2016)

ELEPHANT CENSUS

Year	Female	Male	Calf	Total
2007	14	39	14	67
2010	09	07	07	23
2013	09	14	04	27
2015	01	04	03	08

BIRD CENSUS

Y e a r	No. of Birds Enumerated
2011	35916
2012	21681
2013	21284
2014	17149
2015	14194